



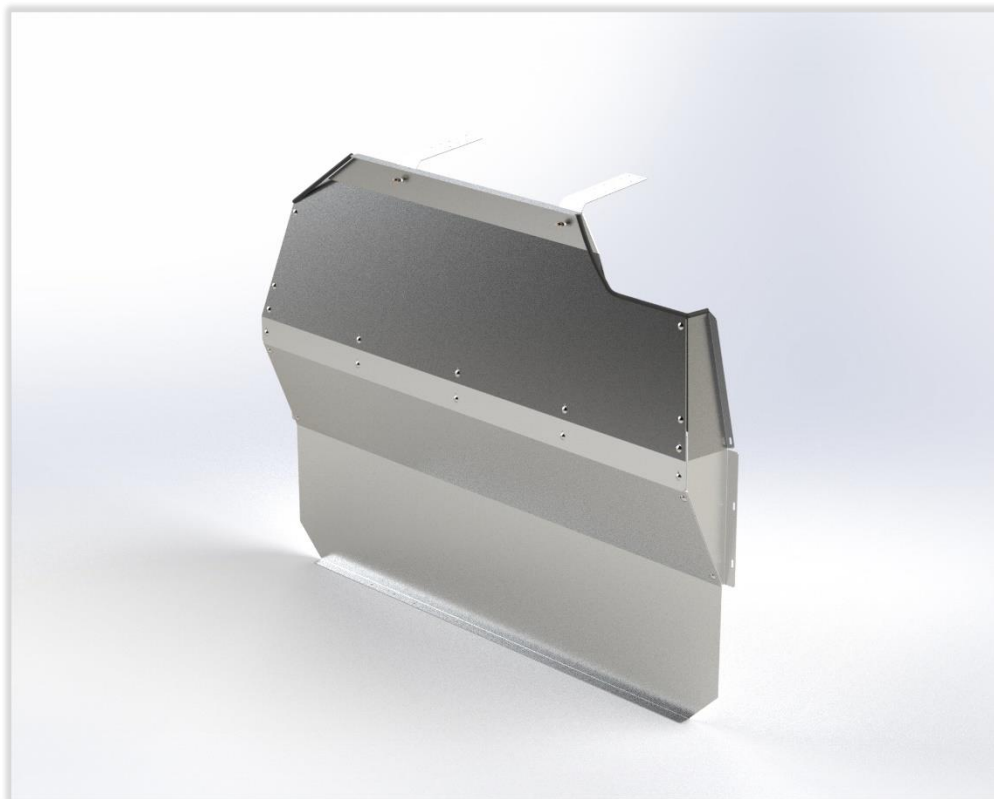
ASSEMBLY & INSTALLATION GUIDE

P10-GMS / P11-GMS

Aluminum Contoured Safety Partition

Fits:

GMC Savana and Chevrolet Express Vans





ATTENTION

PRIOR TO INSTALLATION:

PLEASE CAREFULLY READ AND ADHERE TO ALL WARNINGS AND INSTALLATION GUIDELINES BEFORE USING THIS PRODUCT. FAILURE TO DO SO MAY RESULT IN PROPERTY DAMAGE, SEVERE BODILY INJURY, AND/OR LOSS OF LIFE. THE MANUFACTURER DISCLAIMS ANY RESPONSIBILITY FOR PROPERTY DAMAGE, PERSONAL INJURY, OR FATALITIES THAT MAY OCCUR WHILE UTILIZING PACKD PRODUCTS.

- Neglecting to utilize the provided fasteners, brackets, and following proper installation guidelines may heighten the risk of severe personal injury and/or fatality.
- In instances where drilling is necessary for installation, improper drilling may lead to vehicle damage, electric shock, fire, or fatality.
- If drilling is necessary, ensure that it is restricted to areas authorized by the vehicle's Original Equipment Manufacturer's Body Builders Layout Book (or equivalent document).
- Prior to drilling, verify that critical vehicle components such as the gas tank, wiring harness, or hoses will not be impacted. Consult the vehicle OEM documentation as needed and use a drill collar during drilling to minimize the risk of vehicle damage.
- Before installation, inspect the vehicle to guarantee that the installation will not obstruct critical components such as electrical wiring, fuel tanks, fuel cells, locks, latches, etc.
- The installer or upfitter is responsible for ensuring that anchorages are securely installed on appropriate wall and floor structures.
- Avoid installing systems into weak or unsound materials such as plastics, woods, thin-walled metals, etc., without proper reinforcement.
- Do not install this product in a manner that could interfere with airbag deployment.
- Incorrect installation may lead to water leaks, electric shock, or fire.
- Secure all items in the cargo area properly, and close partition doors while the vehicle is in motion.
- Any modification or unintended use of this product could create a hazardous condition and void the warranty.
- Opt for professional installation conducted by certified technicians well-versed in vehicle upfitting procedures. Entrusting the installation to amateurs could jeopardize both the effectiveness and safety of the product.
- Adhere to local, state, and federal regulations governing vehicle modifications. Failure to comply with these regulations may result in serious legal consequences.

Contents

ASSEMBLY INSTRUCTIONS 4

1 PREPARATION 4

2 ASSEMBLY FASTENER KIT 5

3 INSTALLATION FASTENER KIT..... 5

4 PARTITION ASSEMBLY 6

INSTALLATION INSTRUCTONS 7

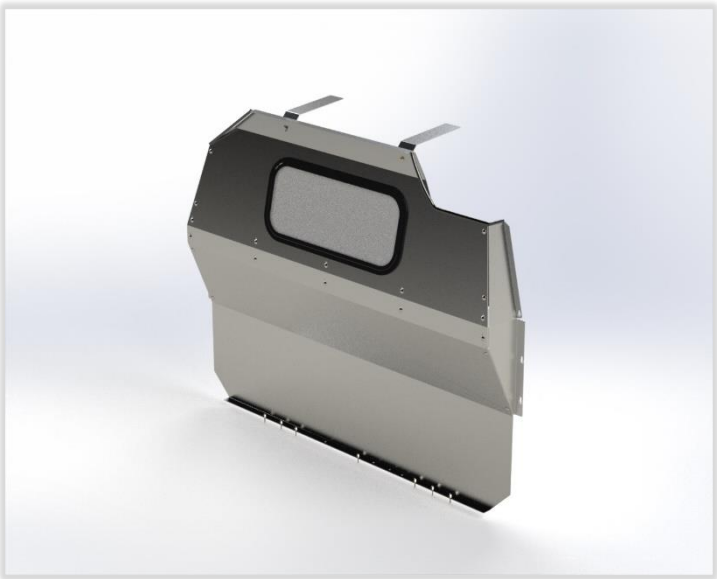
1 INSTALLING PLUS NUTS..... 7

2 FASTENING PARTITION TO THE VEHICLE 9

Required Items

- ☐ 2 People (To Lift Partition)
- ☐ 7/16” Nut Driver Bit
- ☐ 3/8” Drill Bit w/ Drill Collar (Set at 1/2")
- ☐ 1/2" Nut Driver Bit
- ☐ 9/16” Wrench
- ☐ 1-1/8” Hole Saw
- ☐ Plus Nut Tool or Plus Nut Gun (1/4")
- ☐ Marker
- ☐ Cordless Drill
- ☐ Cordless Impact Driver
- ☐ Tin Snips
- ☐ No 2 Robertson Driver Bit

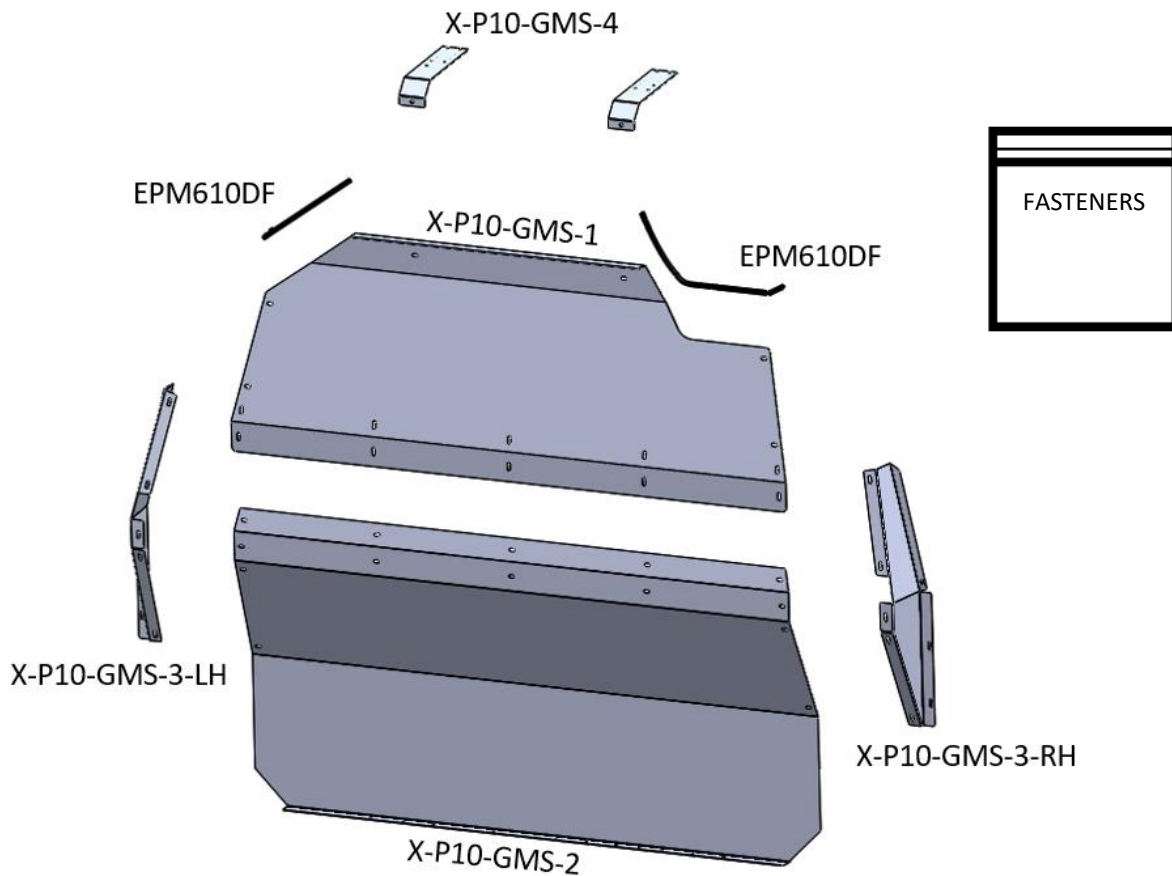
Optional window available. All assembly and installation instructions are identical.



ASSEMBLY INSTRUCTIONS

1 PREPARATION

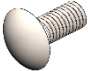

Unpack components and compare to the Bill of Materials. Ensure that all of the parts are present.




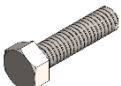



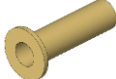



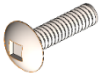
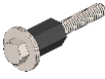
BILL OF MATERIALS

| Part Number | Description | Quantity |
|----------------|-------------------------------|----------|
| X-P10-GMS-1 | GM Partition Upper Panel | 1 |
| X-P10-GMS-2 | GM Partition Lower Panel | 1 |
| X-P10-GMS-3-LH | GM Partition Side Panel, LH | 1 |
| X-P10-GMS-3-RH | GM Partition Side Panel, RH | 1 |
| X-P10-GMS-4 | GM Partition Mounting Bracket | 2 |
| EPM610DF | Rubber Edge Trim | 4 FT |
| HK32 | Hardware Kit | 1 |

2 ASSEMBLY FASTENER KIT

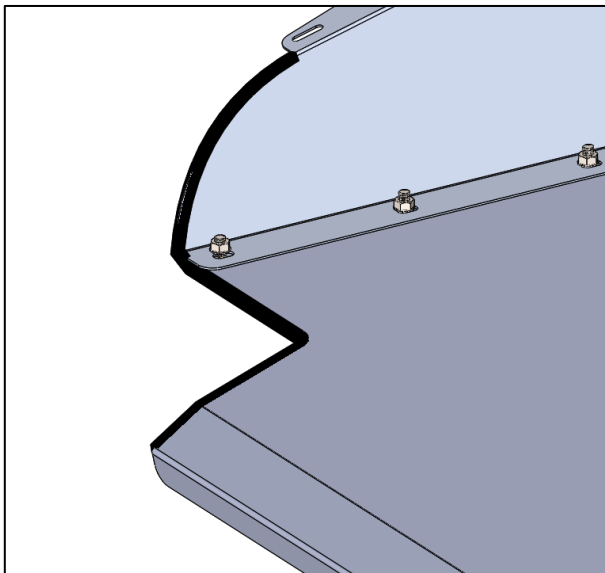
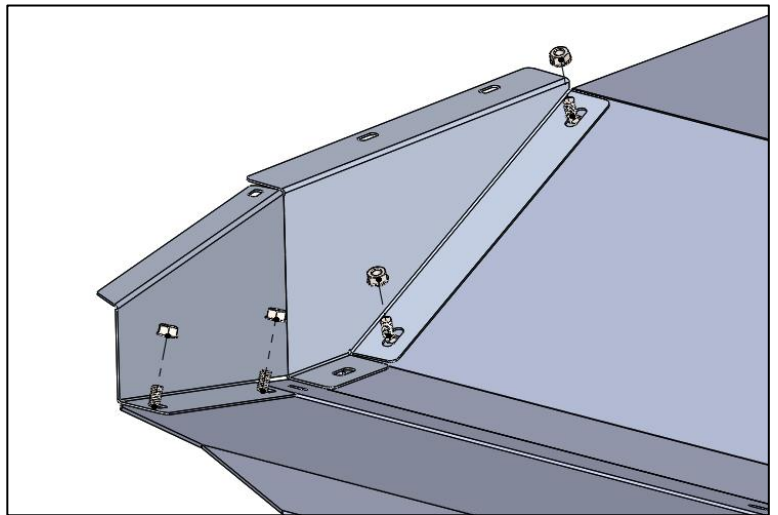
| Quantity | Description | Image | Purpose |
|----------|--------------------------------|---|----------------------|
| 18 | Carriage Bolt 5/16-18 x 3/4 |  | Assembling Partition |
| 18 | Serrated Nut 5/16-18 |  | |

3 INSTALLATION FASTENER KIT

| Quantity | Description | Image | Purpose |
|----------|-------------------------------------|---|--|
| 5 | Hex Washer Head Screw #14 x 3/4" |  | Fastening the Partition to the Vehicle |
| 4 | Hex Bolt 1/4-20 x 2" |  | |
| 4 | 1/4" Flat Washer |  | |
| 4 | 1/4" Lock Washer |  | |
| 4 | 1/4" x 1/2" Nylon Spacer |  | |
| 4 | Plus Nut 1/4" |  | |
| 2 | Serrated Nut 5/16-18 |  | |
| 2 | Hex Bolt 5/16-18 x 3/4 |  | |
| 2 | Flat Washer 5/16 |  | |
| 4 | Pan Head Screw 10-12 x 3/4 |  | |
| 1 | Plus Nut Tool |  | |

4 PARTITION ASSEMBLY

1. Ensure your work surface is clean and smooth to minimize surface scratches. Working on cardboard or foam sheet is recommended.
2. Before assembling, unmask the protective film from all surfaces of each part.
3. Lay the upper and lower panel onto a workbench and fasten the 6 center bolts.
4. When attaching side panels, fasten through the top and bottom holes first.
5. Once the top and bottom bolts are in place, bolt the panels together through the rest of the bolt holes.
6. Place the rubber trim in the top corner of the partition as shown and trim to length using a Tin Snips. Repeat on opposite side.



Tools Used:

Cordless Impact Driver
1/2" Nut Driver Bit
Tin Snips

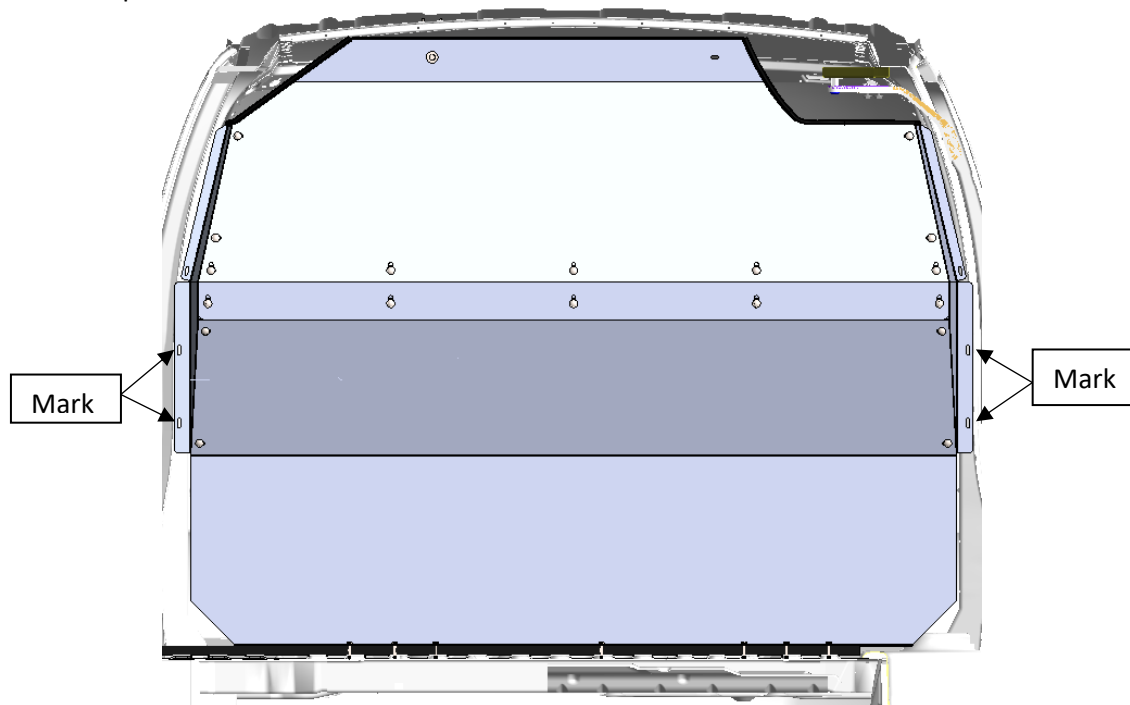
Hardware Used:

18 x Carriage Bolt 5/16-18 x 3/4"
18 x Serrated Flange Nut 5/16-18

INSTALLATION INSTRUCTIONS

1 INSTALLING PLUS NUTS

1. Lift the assembled partition into vehicle and place it in the designated location.
2. Make 4 marks using the slots on the side brackets onto the plastic lining. Pull back the plastic and transfer the marks onto the frame rail. Make sure that the wiring behind the frame rail is moved from behind the marks.
3. Remove partition from vehicle.
4. Use 1-1/8" hole saw to drill out plastic pillar cover in the locations marked in step 2.
5. On the driver side, drill holes using a 3/8" drill bit with a collar to stop drill at 1/2" depth.
6. Install plus nuts.

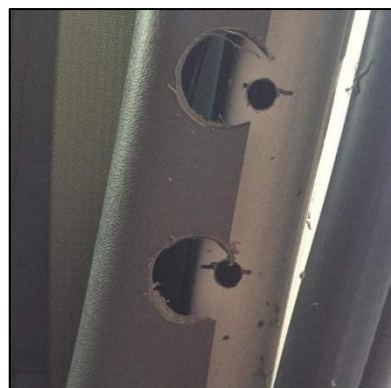


Tools Used:

Cordless Impact Driver
1/2" Nut Driver Bit
3/8" Drill Bit W/ Drill Collar
9/16" Wrench
Marker

Hardware Used:

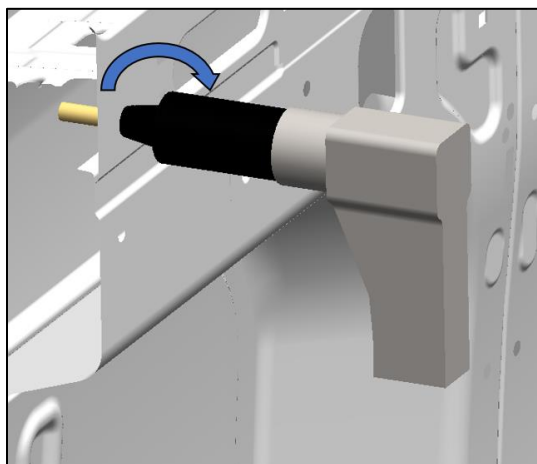
4 x 1/4" Plus Nuts



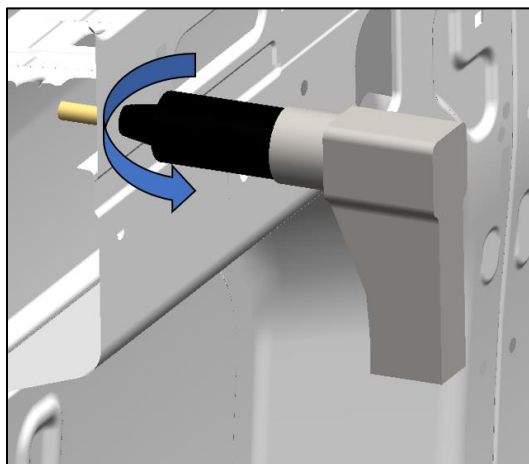
Ⓐ **Using Plus Nut Gun:** (If available- otherwise see B below)

- Place 2 drops of air tool oil into the air fitting regularly.
- Ensure that there is anti-seize on the Plus Nut Gun threads at all times.
- Thread a Plus Nut onto the threads of the gun, then place bolt and Plus Nut through pre-drilled hole.
- Pull trigger of Plus Nut Gun to compress Plus Nut into the material until the noise changes on the gun.
- Reverse direction on gun to unscrew Bolt from the Plus Nut.

FORWARD



REVERSE



Ⓑ **Using Plus Nut Tool:**

STEP 1

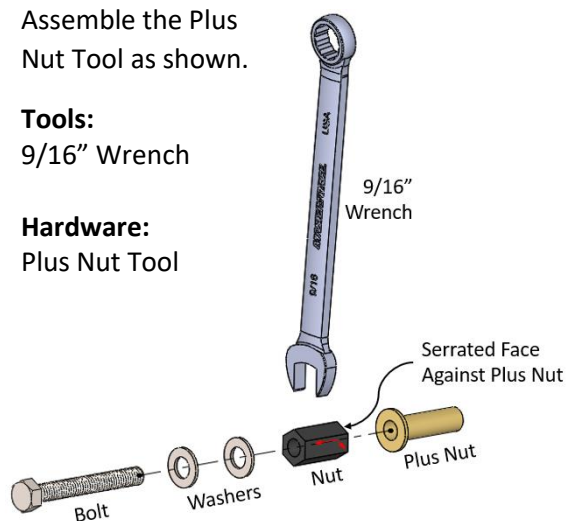
Assemble the Plus Nut Tool as shown.

Tools:

9/16" Wrench

Hardware:

Plus Nut Tool



STEP 2

Fasten Plus Nut to vehicle:

- Insert Plus Nut into hole.
- Hold Nut with wrench.
- Tighten bolt until Plus Nut clamps the vehicle body metal tightly.

Tools:

Cordless Impact Driver

7/16" Nut Driver Bit

9/16" Wrench



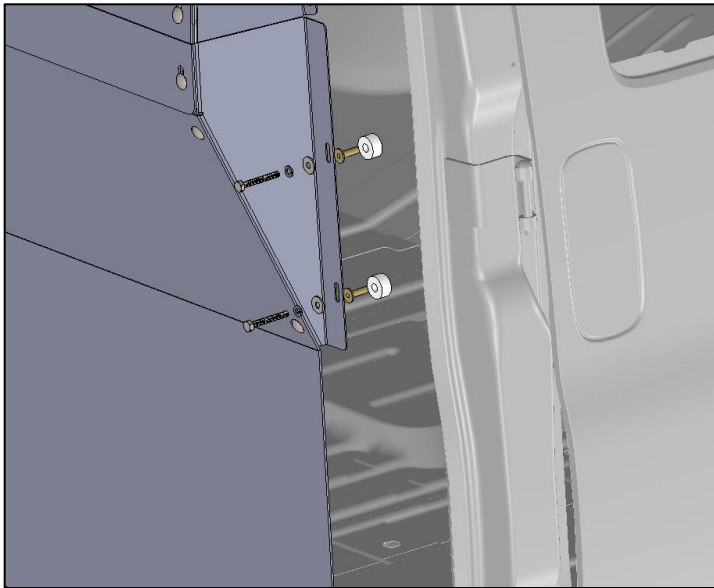
Hardware:

4 x 1/4" Plus Nuts

Plus Nut Tool

2 FASTENING PARTITION TO THE VEHICLE

1. Lift the assembled partition into vehicle and place it back into the designated location.
2. Place 2 Nylon washers between partition and frame of the vehicle.
3. Finger tighten the bolts to align it with the van before fully tightening the bolts.
4. Bolt the Top Mounting Brackets onto the partition.
5. Push on the headliner and feel for the ceiling frame rail. Put two screws into the ceiling bracket into the frame rail.
6. Fasten partition to the floor through the pre drilled slots in the partition.
7. Ensure that all of the fasteners are tight.

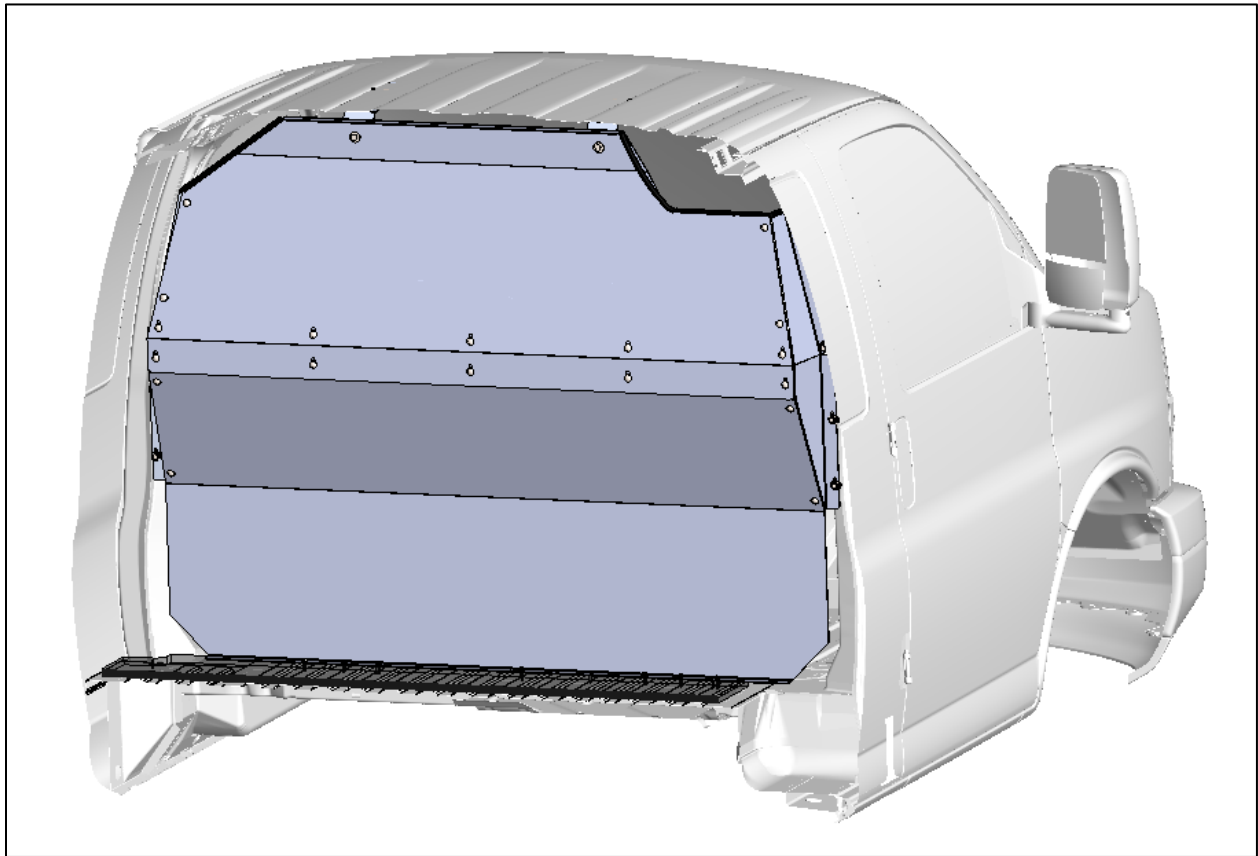


Tools Used:

Cordless Impact Driver
7/16" Nut Driver Bit
1/2" Nut Driver Bit
No 2 Robertson Driver Bit

Hardware Used:

4 x Hex Bolt 1/4-20 x 2"
4 x Flat Washer 1/4"
4 x Lock Washer 1/4"
4 x Nylon Spacer 1/4" x 1/2"
5 x Hex Washer Head Screw 3/4"
2 x Hex Bolt 5/16-18 x 3/4"
2 x Flat Washer 5/16"
2 x Serrated Flange Nut 5/16-18
4 x Pan Head Screw 10-12 x 3/4"



You have successfully installed your Contoured Partition! If you have any questions or concerns, please contact us at (888)-796-3430