

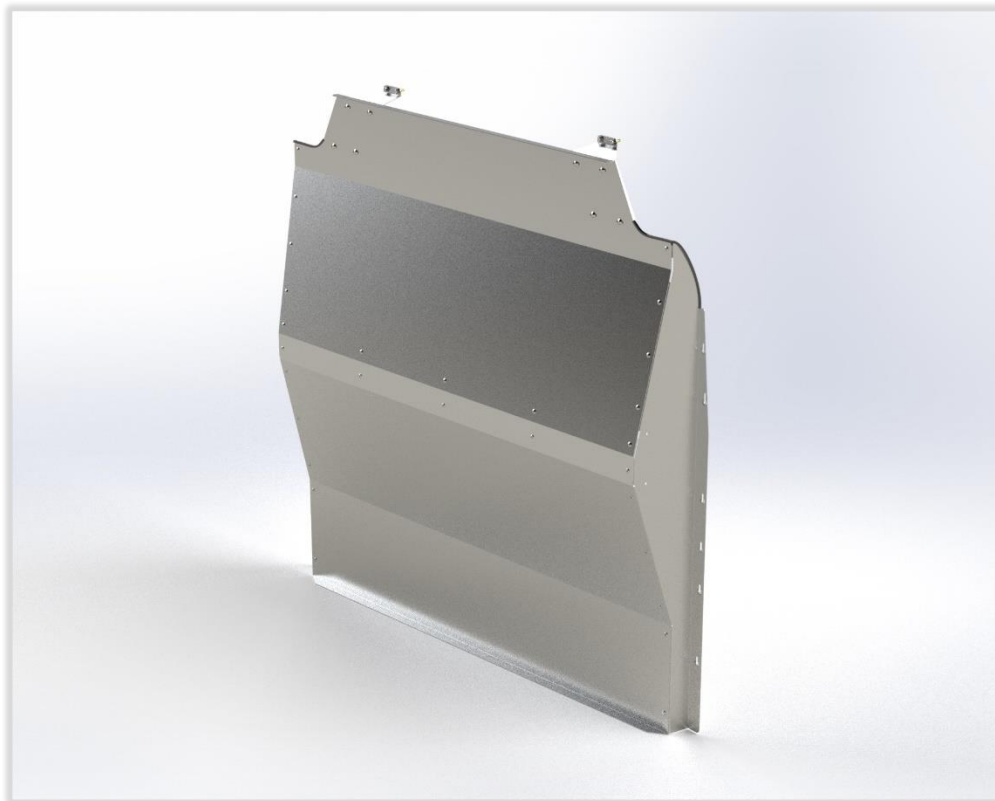


ASSEMBLY & INSTALLATION GUIDE

P10-FTM /P11-FTM

Aluminum Contoured Safety Partition

Fits:
Ford Transit Mid Roof Vans





ATTENTION

PRIOR TO INSTALLATION:

PLEASE CAREFULLY READ AND ADHERE TO ALL WARNINGS AND INSTALLATION GUIDELINES BEFORE USING THIS PRODUCT. FAILURE TO DO SO MAY RESULT IN PROPERTY DAMAGE, SEVERE BODILY INJURY, AND/OR LOSS OF LIFE. THE MANUFACTURER DISCLAIMS ANY RESPONSIBILITY FOR PROPERTY DAMAGE, PERSONAL INJURY, OR FATALITIES THAT MAY OCCUR WHILE UTILIZING PACKD PRODUCTS.

- Neglecting to utilize the provided fasteners, brackets, and following proper installation guidelines may heighten the risk of severe personal injury and/or fatality.
- In instances where drilling is necessary for installation, improper drilling may lead to vehicle damage, electric shock, fire, or fatality.
- If drilling is necessary, ensure that it is restricted to areas authorized by the vehicle's Original Equipment Manufacturer's Body Builders Layout Book (or equivalent document).
- Prior to drilling, verify that critical vehicle components such as the gas tank, wiring harness, or hoses will not be impacted. Consult the vehicle OEM documentation as needed and use a drill collar during drilling to minimize the risk of vehicle damage.
- Before installation, inspect the vehicle to guarantee that the installation will not obstruct critical components such as electrical wiring, fuel tanks, fuel cells, locks, latches, etc.
- The installer or upfitter is responsible for ensuring that anchorages are securely installed on appropriate wall and floor structures.
- Avoid installing systems into weak or unsound materials such as plastics, woods, thin-walled metals, etc., without proper reinforcement.
- Do not install this product in a manner that could interfere with airbag deployment.
- Incorrect installation may lead to water leaks, electric shock, or fire.
- Secure all items in the cargo area properly, and close partition doors while the vehicle is in motion.
- Any modification or unintended use of this product could create a hazardous condition and void the warranty.
- Opt for professional installation conducted by certified technicians well-versed in vehicle upfitting procedures. Entrusting the installation to amateurs could jeopardize both the effectiveness and safety of the product.
- Adhere to local, state, and federal regulations governing vehicle modifications. Failure to comply with these regulations may result in serious legal consequences.

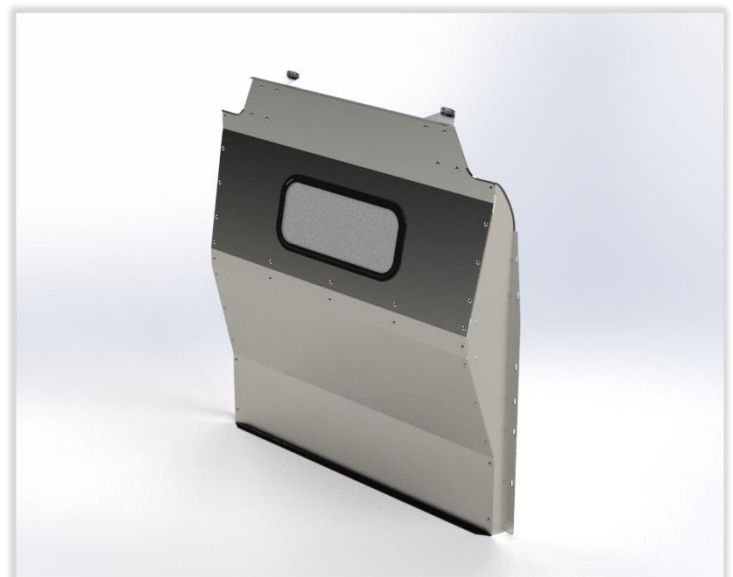
Contents

ASSEMBLY INSTRUCTIONS	4
1 PREPARATION	4
2 ASSEMBLY FASTENER KIT	5
3 INSTALLATION FASTENER KIT.....	5
4 PARTITION ASSEMBLY	6
INSTALLATION INSTRUCTONS.....	7
1 INSTALLING PLUS NUTS.....	7
2 FASTENING PARTITION TO THE VEHICLE	9

Required Items

- ☐ 2 People (To Lift Partition)
- ☐ 3/8" Nut Driver Bit
- ☐ 1/2" Nut Driver Bit
- ☐ 7/16 Nut Driver Bit
- ☐ 10mm Nut Driver Bit
- ☐ 9/16" Wrench
- ☐ Plus Nut Tool or Plus Nut Gun (1/4")
- ☐ Cordless Drill
- ☐ Cordless Impact Driver
- ☐ Tin Snips

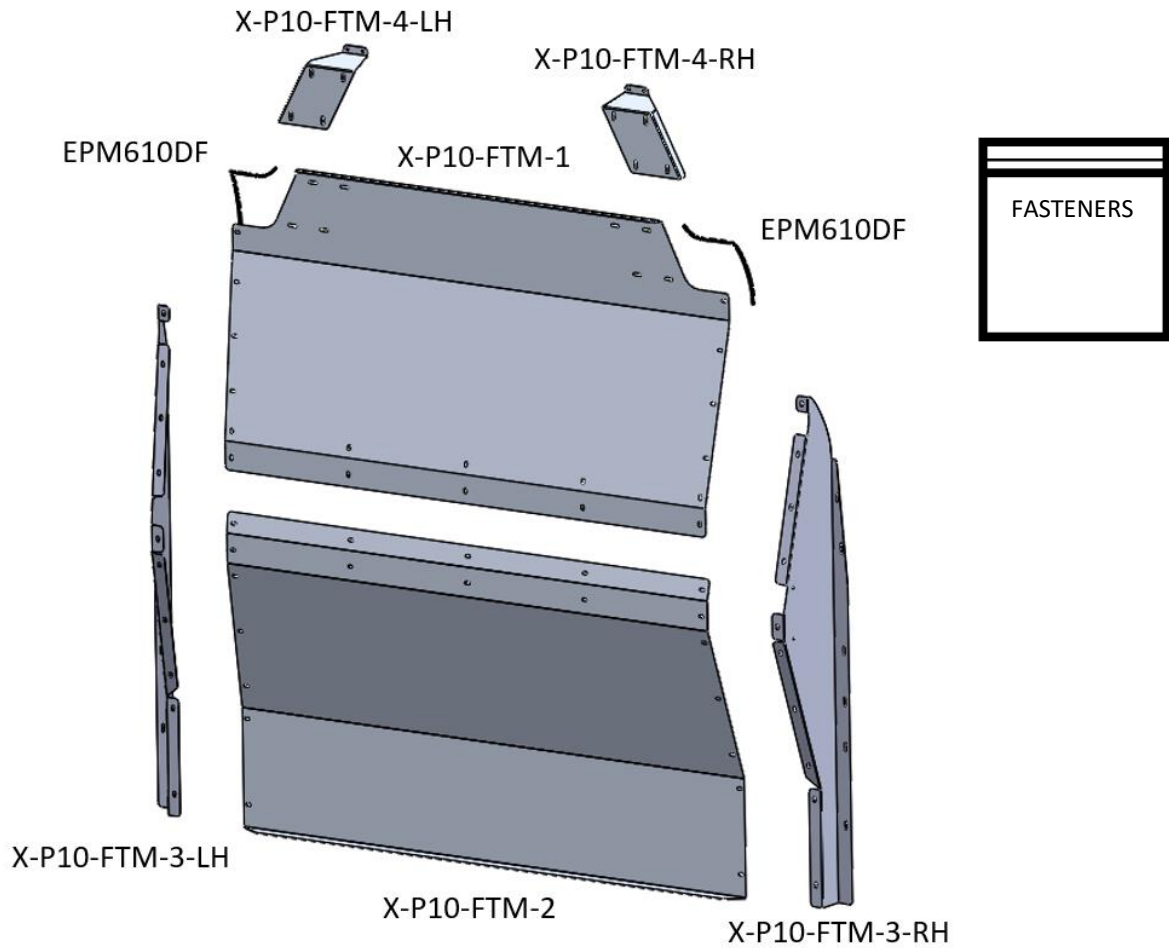
Optional window available. All assembly and installation instructions are identical.



ASSEMBLY INSTRUCTIONS

1 PREPARATION

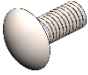

Unpack components and compare to the Bill of Materials. Ensure that all of the parts are present.





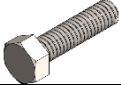


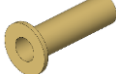
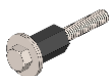
BILL OF MATERIALS

Part Number	Description	Quantity
X-P10-FTM-1	Transit Partition Upper Panel	1
X-P10-FTM-2	Transit Partition Lower Panel	1
X-P10-FTM-3-LH	Transit Partition Side Panel, LH	1
X-P10-FTM-3-RH	Transit Partition Side Panel, RH	1
X-P10-FTM-4-LH	Transit Partition LH Top Mounting Bracket	1
X-P10-FTM-4-RH	Transit Partition RH Top Mounting Bracket	1
EPM610DF	Rubber Edge Trim	4 FT
HK33	Hardware Kit	1

2 ASSEMBLY FASTENER KIT

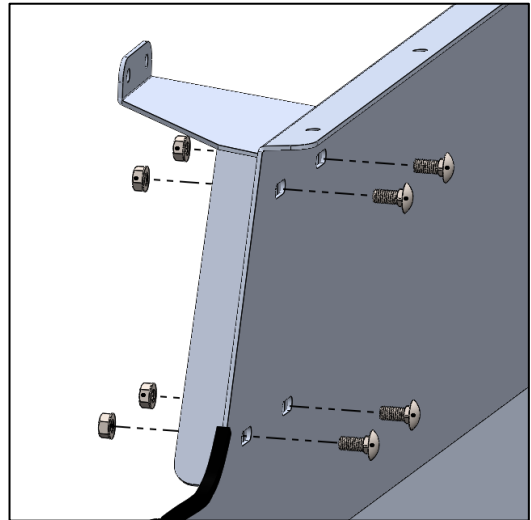
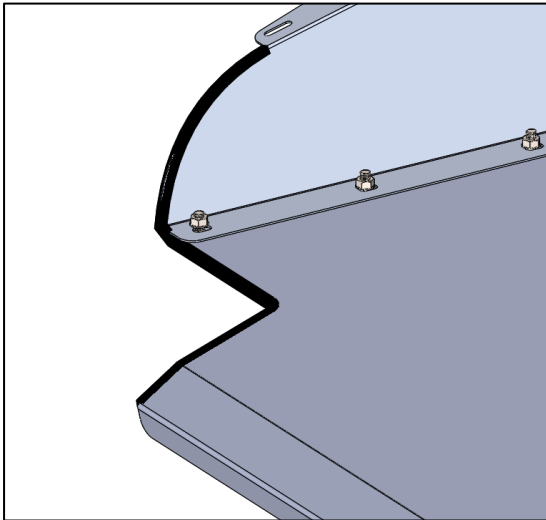
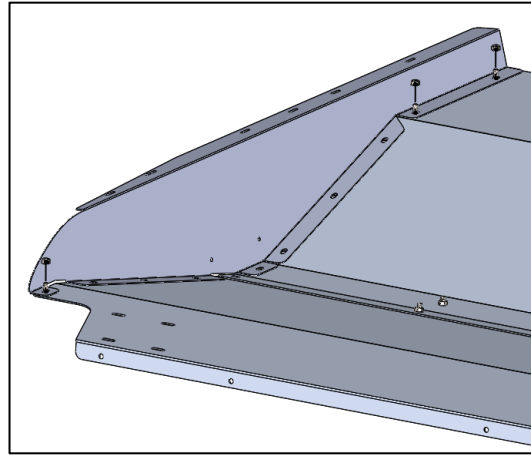
Quantity	Description	Image	Purpose
36	Carriage Bolt 5/16-18 x 5/8		Assembling Partition
36	Serrated Nut 5/16-18		

3 INSTALLATION FASTENER KIT

Quantity	Description	Image	Purpose
4	Hex Washer Head Screw #14 x 3/4"		Fastening the Partition to the Vehicle
6	Hex Bolt M6-1.0 x 20mm		
6	Hex Bolt 1/4-20 x 1-1/4"		
12	1/4" Flat Washer		
12	1/4" Lock Washer		
6	Plus Nut 1/4"		
1	1/4" Plus Nut Tool		

4 PARTITION ASSEMBLY

1. Ensure your work surface is clean and smooth to minimize surface scratches. Working on cardboard or foam sheet is recommended.
2. Before assembling, unmask the protective film from all surfaces of each part.
3. Lay the upper and lower panel onto a workbench and fasten the 6 center bolts.
4. When attaching side panels, fasten through the top and bottom holes first.
5. Once the top and bottom bolts are in place, bolt the panels together through the rest of the bolt holes.
6. Place the rubber trim in the top corner of the partition as shown and trim to length using a Tin Snips. Repeat on opposite side.
7. Hand tighten the Top Mounting Brackets into place.

**Tools Used:**

Cordless Impact Driver
1/2" Nut Driver Bit
Tin Snips

Hardware Used:

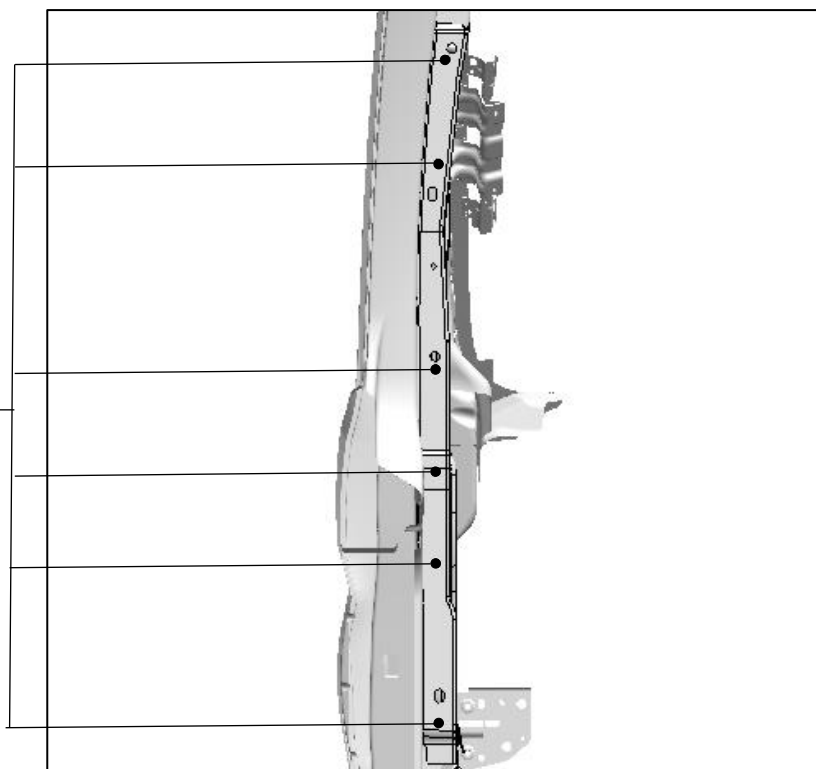
36 x Carriage Bolt 5/16-18 x 5/8"
36 x Serrated Flange Nut 5/16-18

INSTALLATION INSTRUCTIONS

1 INSTALLING PLUS NUTS

1. Locate factory holes on the drivers side as shown below.
2. Install plusnuts into six factory holes on drivers side.

Install plus
nuts into six
factory holes.



Tools Used:

Cordless Impact Driver
7/16" Nut Driver Bit
9/16" Wrench

Hardware Used:

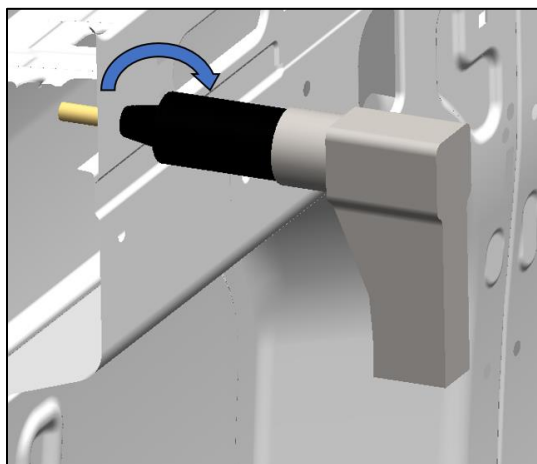
6 x 1/4" Plus Nuts



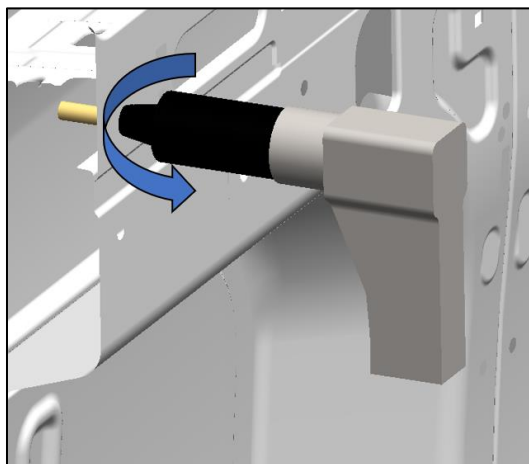
Ⓐ **Using Plus Nut Gun:** (If available- otherwise see B below)

- Place 2 drops of air tool oil into the air fitting regularly.
- Ensure that there is anti-seize on the Plus Nut Gun threads at all times.
- Thread a Plus Nut onto the threads of the gun, then place bolt and Plus Nut through pre-drilled hole.
- Pull trigger of Plus Nut Gun to compress Plus Nut into the material until the noise changes on the gun.
- Reverse direction on gun to unscrew Bolt from the Plus Nut.

FORWARD



REVERSE



Ⓑ **Using Plus Nut Tool:**

STEP 1

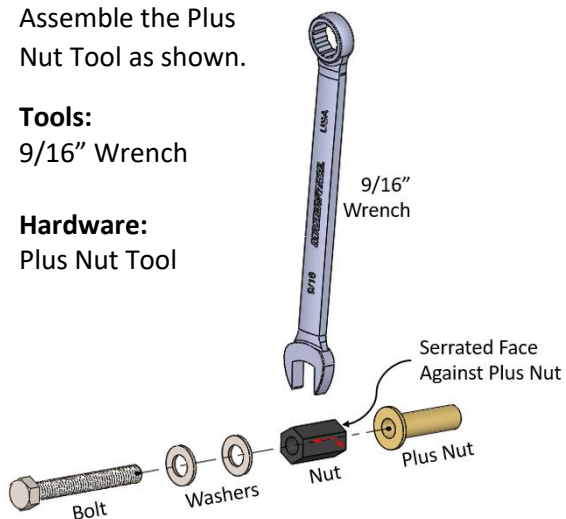
Assemble the Plus Nut Tool as shown.

Tools:

9/16" Wrench

Hardware:

Plus Nut Tool



STEP 2

Fasten Plus Nut to vehicle:

- Insert Plus Nut into hole.
- Hold Nut with wrench.
- Tighten bolt until Plus Nut clamps the vehicle body metal tightly.

Tools:

Cordless Impact Driver

7/16" Nut Driver Bit

9/16" Wrench



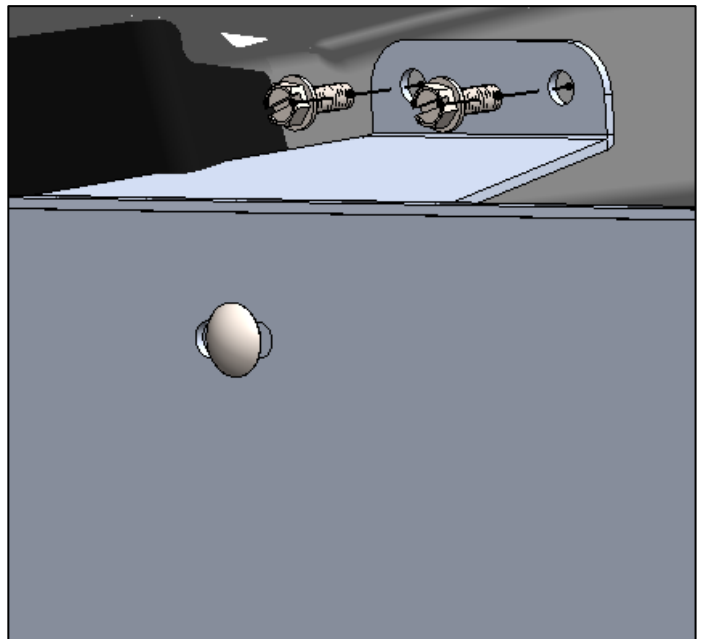
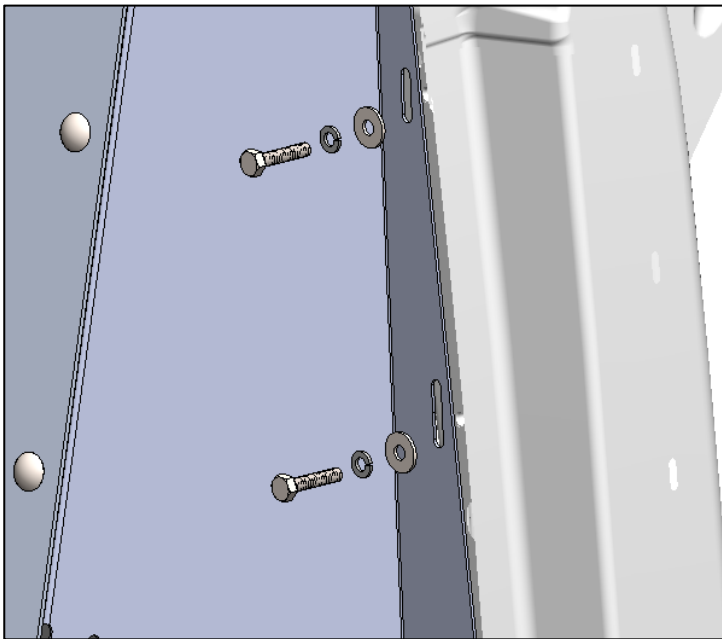
Hardware:

6 x 1/4" Plus Nuts

Plus Nut Tool

2 FASTENING PARTITION TO THE VEHICLE

1. Lift the assembled partition into vehicle and place it into the designated location.
2. Fasten 2 bolts into each side of the partition to align it with the van before installing the rest of the bolts.
3. Fasten the top brackets to the roof crossmember of the van using the screws provided.
4. Ensure that all fasteners are tight.

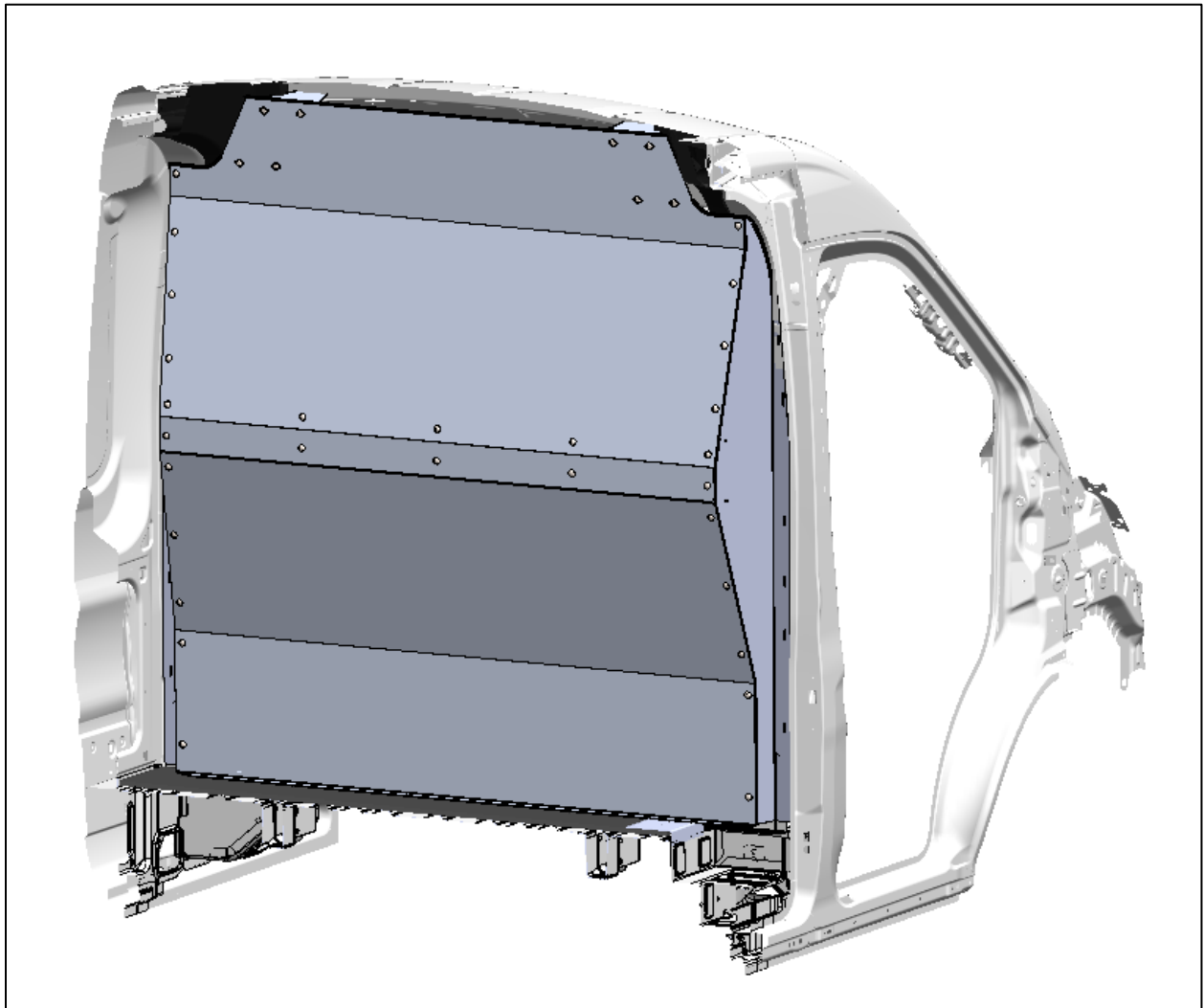


Tools Used:

Cordless Impact Driver
7/16" Nut Driver Bit
10mm Nut Driver Bit
3/8" Nut Driver Bit

Hardware Used:

6 x Hex Bolt M6 x 1.0 x 20mm
6 x Hex Bolt 1/4-20 x 1-1/4"
12 x Flat Washer 1/4"
12 x Lock Washer 1/4"
4 x Hex Washer Head Screw #14 x 3/4"



You have successfully installed your Contoured Partition! If you have any questions or concerns, please contact us at (888)-796-3430